

张狂的白调延伸

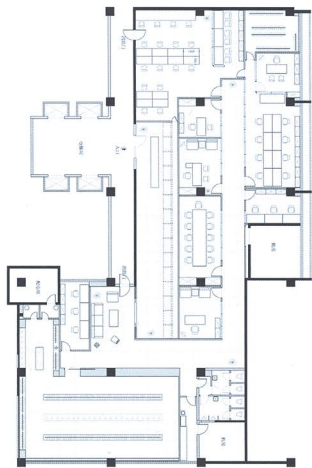
深圳西帷办公室

采编 > 陈惠慧 文编 > 吴钢 翻译 > 巫雯锦

INCANA Office, Shenzhen

这间办公室属于一个新兴的服装品牌，2010年创办的西帷以高端、年轻、创新来定位自己。因此希望本次的设计可以为其建立起一个没有地域、文化束缚的张狂、开放的国际化办公空间，传达其进步的企业形象。

This office belongs to a burgeoning clothing brand. INCANA, founded in 2010, has high-end, young and innovative orientation. It hopes that an open international office space which doesn't have regional and cultural constraint could be set up through this design, so as to transmit its progressive corporate image.



项目面积: 750平方米
项目地点: 深圳
设计单位: 汉诺森
设计师: 王文亮
主要材料: 瓷砖反面涂刷、白色氟碳漆金属网

Area: 750 m²
Location: Shenzhen
Design Company: Halucinante Design
Designer: Wenliang Wang
Main Material: Ceramic Tile Reverse Painted, White Fluorocarbon Paint Metal Net

通过“浪费”工作面积，
而换取的一条公共长廊，
作为步入企业内部空间的过渡，
提升人们的情感预期。



空间的整体设计注重传达空间带来的品牌感受。通过“浪费”工作面积而换取的一条公共长廊，作为步入企业内部空间的过渡，提升人们的情感预期。进入办公空间，设计师用白色铁网的半封闭隔断，在紧凑合理的规划中带来明净舒畅的工作氛围。

The overall design pays attention to transmit the brand experience brought by the space. Through the exchange of "wasting" working area for a public long corridor, a transitional space which leads into the corporate interior space is created, enhancing people's affection anticipation. Upon entering the office space, white steel wire netting is applied as semi-closed partition, and bright, clean and comfortable working atmosphere is brought through the compact and reasonable planning.





材质运用上反对堆砌，尝试利用廉价瓷砖的反面肌理，通过重新拼接打磨、涂刷，显现出一种精致、有序的美感，同时显得温馨而时尚。墙面与白色金属网的连接呼应，为空间注入纯净而轻盈的独特气质。

The material application opposes stuffing and tries to utilize the reverse texture of the cheap tiles, after matching, polishing and painting, a kind of delicate and ordered beauty is created, showing warm and fashionable feelings. The linkage and echoing between wall and white metal net add pure and graceful unique temperament to the space.

